



# Corporate Presentation

## August 2016

---

Strictly Private & Confidential

# Important Information & Disclaimer

## STRICTLY PRIVATE & CONFIDENTIAL

The content of information contained in these slides and the accompanying verbal presentation (together, the “Presentation”) has not been approved by an authorised person within the meaning of the Financial Services and Markets Act 2000 (“FSMA”). Reliance upon this Presentation for the purpose of engaging in any investment activity may expose an individual to a significant risk of losing all of the property or other assets invested. If any person is in any doubt as to the contents of this Presentation, they should seek independent advice from a person who is authorised for the purposes of FSMA and who specialises in advising in investments of this kind. This Presentation is being supplied to you solely for your information. This Presentation has been prepared by, and is the sole responsibility of, the directors of TomCo Energy plc (the “Company”). Those directors have taken all reasonable care to ensure that the facts stated herein are true to the best of their knowledge, information and belief.

This Presentation does not constitute, or form part of, any offer or invitation to sell or issue, or any solicitation of any offer to purchase or subscribe for, any shares in the Company nor shall it or any part of it, or the fact of its distribution, form the basis of, or be relied upon in connection with, or act as any inducement to enter into any contract therefore.

No reliance may be placed for any purpose whatsoever on the information contained in this Presentation or on its completeness, accuracy or fairness thereof, nor is any responsibility accepted for any errors, misstatements in, or omission from, this Presentation or any direct or consequential loss however arising from any use of, or reliance on, this Presentation or otherwise in connection with it.

Some or all of the information contained in the Presentation (and any other information which may be provided) or any of the terms or other facts relating to the proposed Placing may be inside information relating to the securities of the Company within the meaning of the Criminal Justice Act 1993 and the Market Abuse Regulations (EU/596/2014) (“MAR”). Recipients of this information shall not disclose any of this information to another person or use this information or any other information to deal, or to encourage another person to deal in the securities of the Company. Recipients of this information shall ensure that they comply or any person to whom they disclose any of this information complies with this paragraph and also with MAR and the FSMA in relation to market abuse. The term “deal” is to be construed in accordance with the Criminal Justice Act 1993 and the Market Abuse Regulation.

By accepting this Presentation you confirm, represent and warrant that you have consented to receive inside information (as defined above and you agree not to deal in any securities of the Company until such time as such inside information has been made public and until such time that the Placing has been publicly announced by the Company.

This Presentation may not be reproduced or redistributed, in whole or in part, to any other person, or published, in whole or in part, for any purpose without the prior consent of the Company. The contents of this Presentation are confidential and are subject to updating, completion, revision, further verification and amendment without notice.

The Presentation is being distributed on request only to, and is directed at, authorised persons or exempt persons within the meaning of FSMA or any order made thereunder or to those persons falling within the following articles of the Financial Services and Markets Act 2000 (Financial Promotion) Order 2005 (as amended) (the “Financial Promotion Order”): Investment Professionals (as defined in Article 19(5)) and High Net Worth Companies (as defined in Article 49(2)). Persons who do not fall within any of these definitions should not rely on this Presentation nor take any action upon it but should return it immediately to the Company.

(together, the “US”), Canada, Japan, Australia, the Republic of South Africa, or the Republic of Ireland, or to any corporation, partnership or other entity created or organised under the laws thereof, or in any other country outside the United Kingdom where such distribution may lead to a breach of any legal or regulatory requirement. The recipients should inform themselves about and observe any such requirements or relationship.

The Company’s ordinary shares have not been, and are not expected to be, registered under the United States Securities Act 1933, as amended, (the “US Securities Act”) or under the securities laws of any other jurisdiction, and are not being offered or sold, directly or indirectly, within or into the US, Canada, Japan, Australia, the Republic of South Africa or the Republic of Ireland or to, or for the account or benefit of, any US persons or any national, citizen or resident of the US, Canada, Japan, Australia, the Republic of South Africa or the Republic of Ireland, unless such offer or sale would qualify for an exemption from registration under the US Securities Act and/or any other applicable securities laws.

This Presentation or documents referred to in it contain forward-looking statements. These statements relate to the future prospects developments and business strategies of the Company and its subsidiaries (the “Group”). Forward-looking statements are identified by the use of such terms as “believe”, “could”, “envisage”, “estimate”, “potential”, “intend”, “may”, “plan”, “will” or the negative of those, variations or comparable expressions, including references to assumptions. The forward-looking statements contained in this Presentation are based on current expectations and are subject to risks and uncertainties that could cause actual results to differ materially from those expressed or implied by those statements. If one or more of these risks or uncertainties materialises, or if underlying assumptions prove incorrect, the Group’s actual results may vary materially from those expected, estimated or projected. Given these risks and uncertainties, potential investors should not place any reliance on forward-looking statements. These forward-looking statements speak only as at the date of this Presentation.

No undertaking, representation, warranty or other assurance, expressed or implied, is made or given by or on behalf of the Company, SP Angel Corporate Finance LLP (“SP Angel”) or any of their respective directors, officers, partners, employees or advisers or any other person as to the accuracy or the completeness of the information or opinions contained herein and to the extent permitted by law no responsibility or liability is accepted by any of them for any such information or opinions. Notwithstanding the aforesaid, nothing in this paragraph shall exclude liability for any representation or warranty made fraudulently.

SP Angel, who are regulated in the United Kingdom by the Financial Conduct Authority, act only for the Company in relation to the Placing and are not acting for or advising any other person or treating any other person as its customer in relation thereto and will not be responsible for providing the protections afforded to their customers or for advising any other person in relation to the matters contained herein or on any matters concerning the Placing. No representation or warranty, express or implied, is made by SP Angel as to the contents of this Presentation and, without limiting the statutory rights of any person to whom this Presentation is issued, no liability whatsoever is accepted by SP Angel for the accuracy of any information or opinions contained in this Presentation or for the omission of any material information for which the directors of the Company are solely responsible.

# Important information

## STRICTLY PRIVATE & CONFIDENTIAL

### DISCLAIMER: Red Leaf Information

The Company specifically draws to the attention of potential investors to whom this Presentation is made or delivered the fact that the information herein regarding Red Leaf Resources Inc ("Red Leaf") and its Eco Shale® in capsule process ("The Red Leaf Information") or which has been provided to the Company by Red Leaf has either a) been transcribed by the Company from presentations made to it by Red Leaf or b) derived from information obtained by the Company from Red Leaf's website: [www.redleafinc.com](http://www.redleafinc.com). Red Leaf is a private limited company and is therefore not subject to any formal disclosure or reporting obligations imposed by any stock exchange or regulatory authority.

Although the Directors have taken all reasonable care to ensure that the Red Leaf Information stated herein is complete and accurate to the best of their knowledge, information and belief, the Red Leaf Information has not been the subject of independent verification or investigation by the Company.

No reliance may therefore be placed for any purpose whatsoever on the Red Leaf Information contained in this Presentation or on the completeness, accuracy or fairness of the Red Leaf Information, nor is any responsibility accepted for any errors, misstatements in, or omission from, this Presentation ( including the Red Leaf Information) or any direct or consequential loss however arising from any use of, or reliance on, this Presentation ( including the Red Leaf Information) or otherwise in connection with it.



## *TomCo – In Brief*

**TomCo is an AIM listed oil shale company (AIM:TOM.L - market capitalisation £2.38million\*)**

- TomCo's major asset is the Holliday Block lease in Uintah County, Utah (100%). It has a JORC Measured Resource of 126 million barrels of oil in oil shale. Fully permitted for mining for the next two years and can be extended
- Tomco also owns 3,333.33 A shares (0.43%) of unlisted, Utah-based Red Leaf Resources (RLR) which it acquired for \$5million in April 2012
- The Company has a \$2million technology licence agreement with RLR to use its EcoShale® In-Capsule® Process in Utah
- TomCo is diversifying into palm oil processing in West Africa to generate positive cash flows due to delays over RLR's Early Production System Capsule and its development timetable

*\* correct as at 17:30 Hrs 16<sup>th</sup> August 2016*

## *TomCo – Board of Directors*

### **Andrew Jones – Chairman**

- Andrew has over 10 years' experience in capital markets and corporate finance as well as specialist experience in Technology & Media

### **Christopher Brown – Chief Executive Officer**

- Chris is the Founder and Managing Director of London Mining plc, which sold a Brazilian iron ore mine for \$810 million in 2008. He is indirectly associated with Kenglo One Ltd, a major investor in TomCo since 2010 with 23.8%. He has over 30 years experience in resources and business

### **Simon Corney – Non-Executive Director**

- Simon has over 25 years of experience in M&A, private equity and asset management, as well as specialist experience in oil and gas.

## *TomCo – Over £300K of Cost Savings in Last 18 Months*

Item	18 Months ago (pa)	July 2016 (pa)	Cost Saving (pa)
Chairman	£63,500	£30,000	£33,500
CEO	£125,000	£40,000	£85,000
Finance Director	£103,500	£0	£103,500
Non-Executive Director	£0	£30,000	-£30,000
Company Secretary & Financial Controller	£93,150	£15,000	£78,150
Advisor's Annual Fees	£65,000	£40,000	£25,000
Storage	£7,200	£0	£7,200
<b>TOTAL</b>	<b>£457,350</b>	<b>£155,000</b>	<b>£302,350</b>

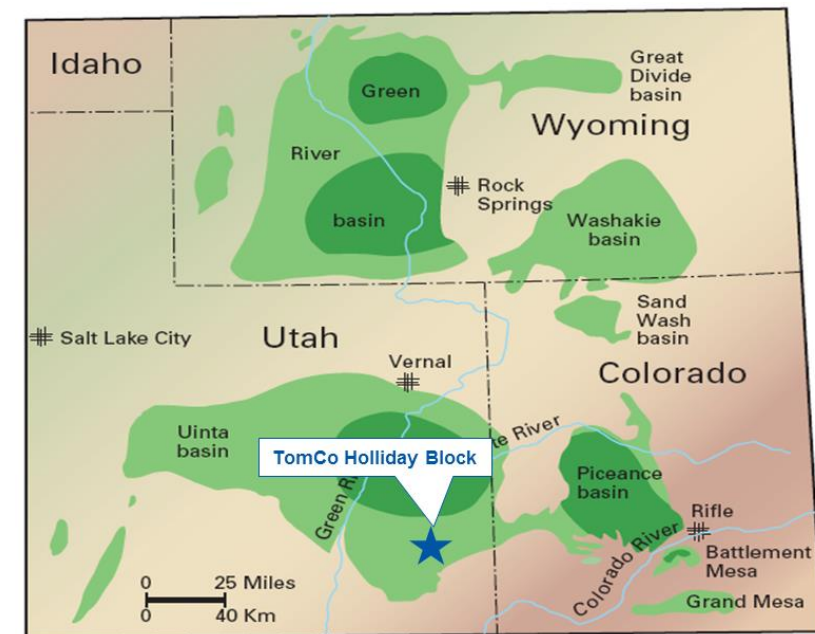
Cash in hand at 30 June 2016 = £165,463

## *Kerogen Oil Shale*

- Kerogen oil shale deposits are fine grained sedimentary rocks, rich in organic matter (kerogen) which is formed by decaying organic material by heat & pressure in environment similar to conventional oil
- It is different from shale oil (requires retorting rather than fracking), oil sands (smaller grain size) and coal (contains 60-90% inert matter rather than <40%)
- The largest deposits of kerogen oil shale in the world occur in the United States, in the Green River Formation, which covers portions of Colorado, Utah, and Wyoming
- TomCo's Holliday Block Project is in Utah



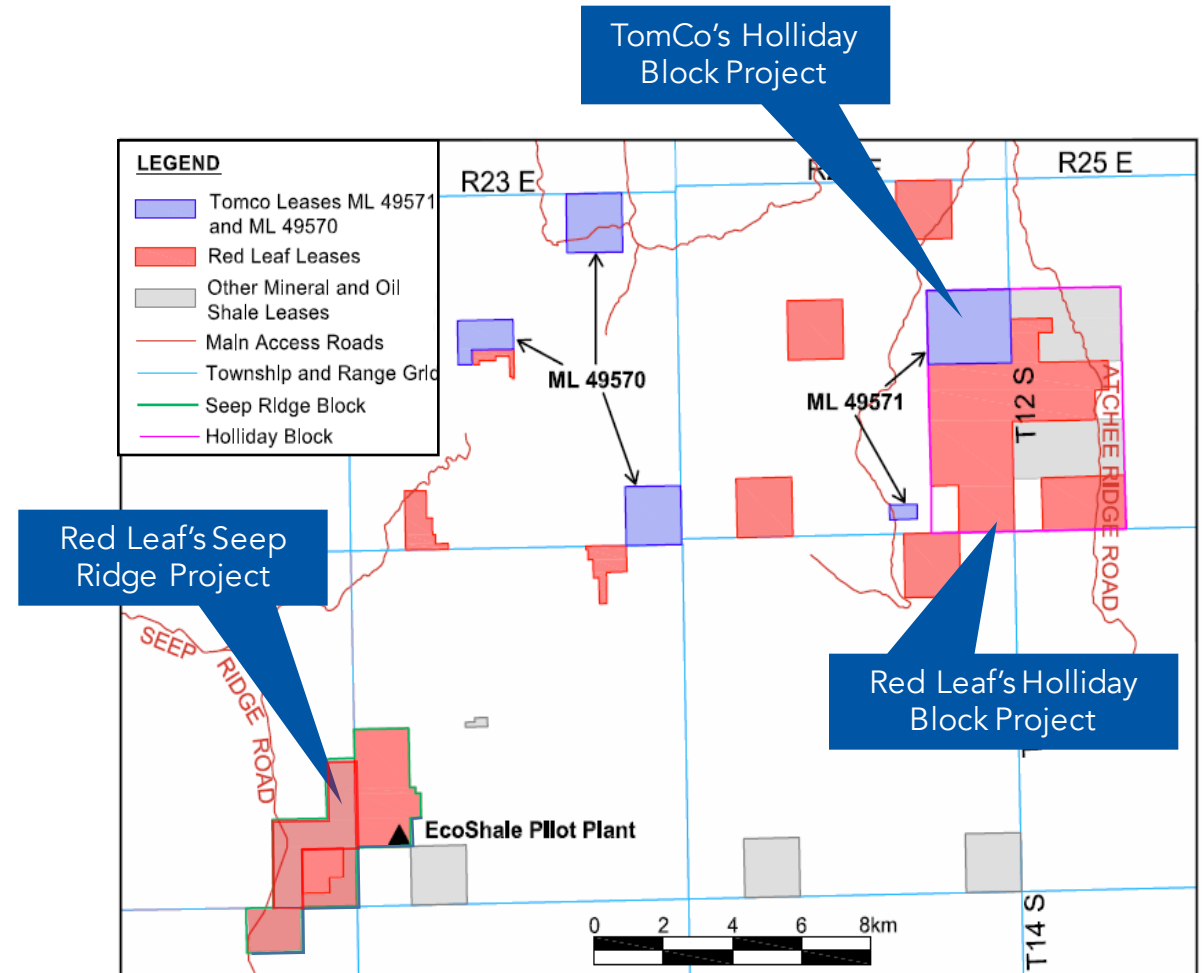
Kerogen (Oil) Shale



# TomCo's Location With Respect to RedLeaf's Leases

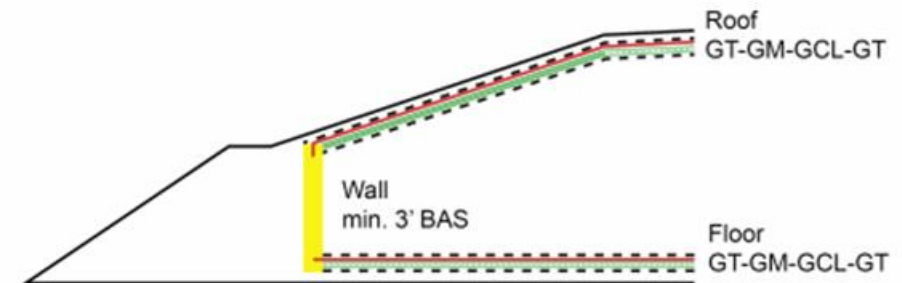
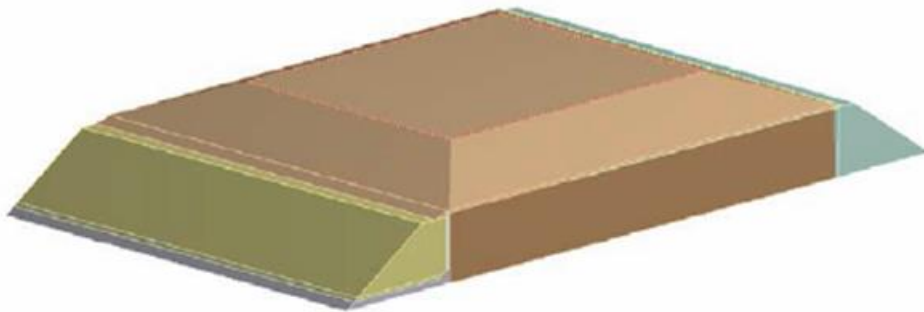
## Strategic Location

- TomCo has 2,919 acres of State Mining Leases in Uintah County, Utah
- TomCo's Holliday Block Lease covers 1,186 acres, contains a Measured JORC Resource of 126 million barrels of oil, and is strategically located adjacent to RLR's Holliday Block Project and about 20km NW of RLR's Seep Ridge Project and Pilot Plant
- TomCo owns deeper kerogen oil shale leases outside the Holliday Block that contains an Inferred JORC Resource of 12 million barrels of oil



## *RedLeaf EcoShale<sup>®</sup> In-Capsule<sup>®</sup> Design*

- RedLeaf's EcoShale<sup>®</sup> process has evolved over time and now involves direct heating of shale rubble in a totally enclosed environment
- The capsules will consist of a bed of oil shale rubble, surrounded by an insulating layer of shale gravel, completely enclosed within an impermeable barrier layer of geosynthetic liners and Bentonite Amended Soil (BAS)
- Direct heating was chosen over indirect heating because it is lower in cost, and it has the ability to perform heat recovery inside the capsule, which improves the energy efficiency of the technology and reduces the overall CO<sub>2</sub> footprint



GT= Geotextile, GM = Geomembrane, GCL = Geosynthetic Clay Layer

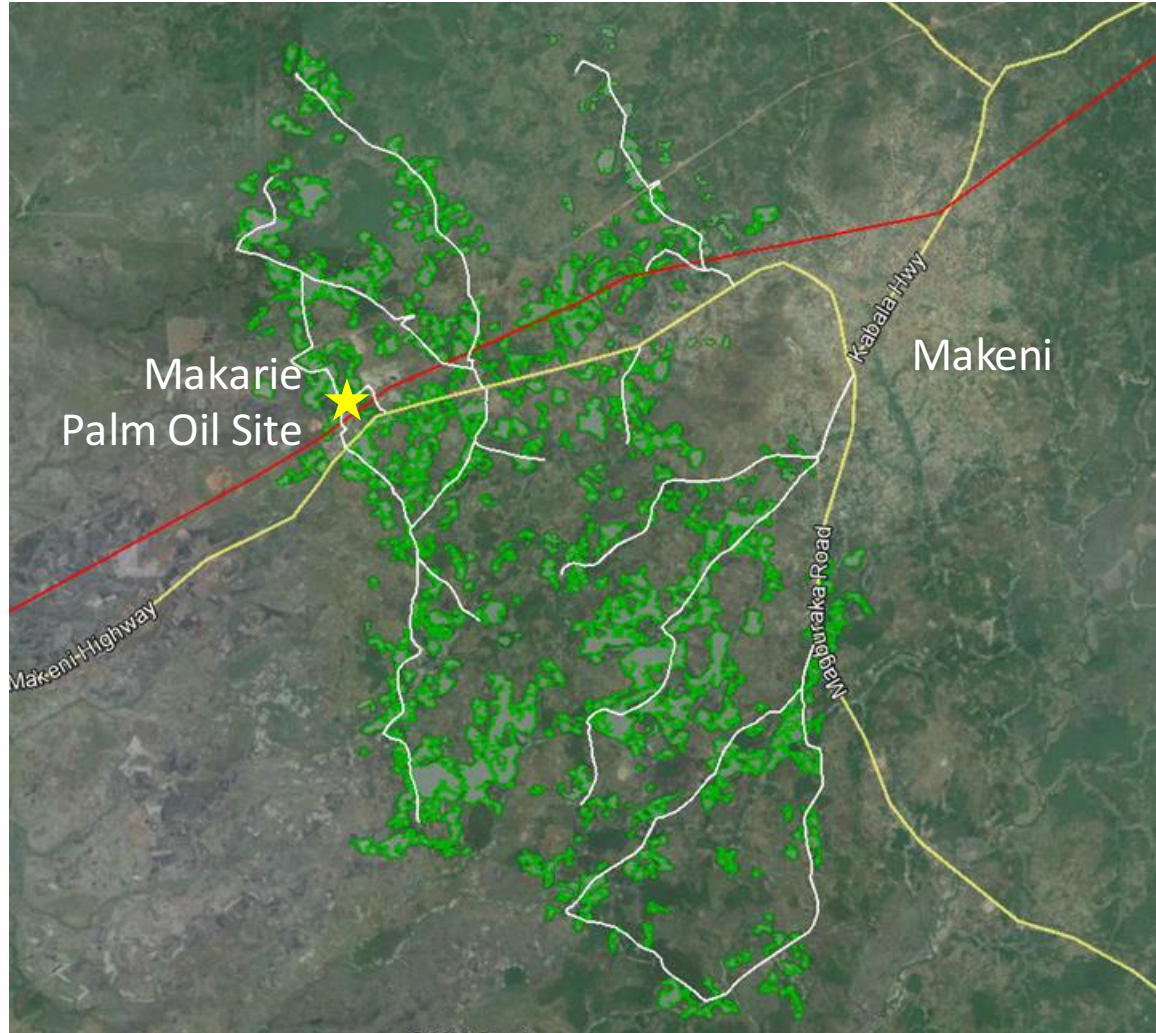
## *RedLeaf Ecoshale® In-Capsule® Design*

- RedLeaf's current priority is to demonstrate the capsule technology through the successful completion of the Early Production System ("EPS")
- RedLeaf recently completed a pre-FEED (preliminary front end engineering design) commercial study for the EcoShale Technology on its Seep Ridge lease in Utah for a 30,000 barrels per day production facility
- Based on the initial results, RedLeaf is now conducting an EPS basis of design engineering study for an EPS capsule. This study that should be completed in the Autumn 2016 then move to an engineering phase
- The full report from RedLeaf has not been finalised or released yet
- RedLeaf's joint venture partner and shareholder, TOTAL E&P USA Oil Shale, LLC ("TOTAL"), has advised RedLeaf that it is not prepared to move forward with an EPS. Discussions between both companies continue

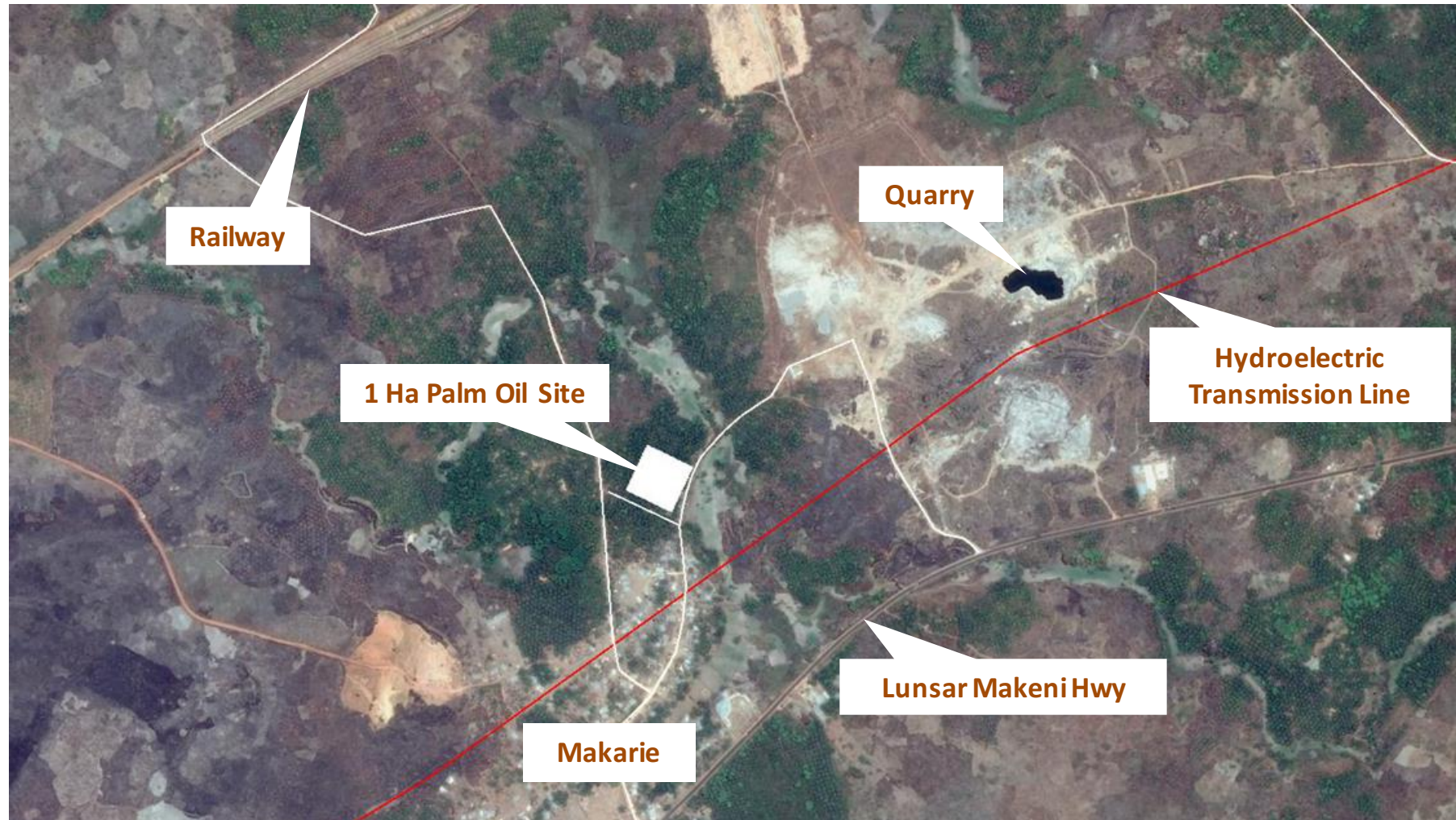
## *In the Meantime, TomCo is Diversifying into Palm Oil*

- Why? TomCo needs to generate cash flows and we have identified a low cost opportunity to get into palm oil processing in West Africa using our established relationships
- There is strong support for a palm oil processing facility near Makeni in Sierra Leone from oil palm plantation farmers, the local chiefdoms and the Government of Sierra Leone
- There are a large number of oil palm plantations near Makarie, 10km west of Makeni, with farmers keen to sell their Fresh Fruit Bunches (FFB)
- The Bumbuna Hydroelectric Transmission line runs through Makarie, providing cheaper power
- The initial 1 tonne per hour (tph) FFB palm oil processing plant will cost less than \$0.5m, may be part-funded with debt, and should take less than 7 months to construct
- Tax concessions include 0% duty on Imports for 5 years and 0% corporate tax for 10 years
- The processing plant is scalable up to 2tph once the economics have been proven

## *1,845Ha of Oil Palm Farms and Infrastructure Near Makeni*



## *Palm Oil Site Near Makarie*



## *Work Already Conducted on Makarie Palm Oil Project*

- Visited 11 villages near Makarie and ascertained support to sell FFB
- Village Chief of Makarie, Abdulai Conteh, provided land for free to build a plant next to Makarie
- Negotiated prices to buy FFB from farmers
- Engaged palm oil consultant Stuart Honeysett from Astratec Africa Ltd to conduct feasibility study on palm oil plant and markets, as well as trip to India to finalise design and costs for palm oil plant
- Final site selected then surveyed by Land Title Surveyor and official land title granted
- Libation ceremonies completed, land brushed by villagers, and coconut and fruit trees purchased from landowners
- Main part of water well constructed before start of rainy season and bulldozing of site has commenced
- Incorporation of TomCo Palm Oil Ltd, a Sierra Leonean subsidiary company, wholly owned by TomCo

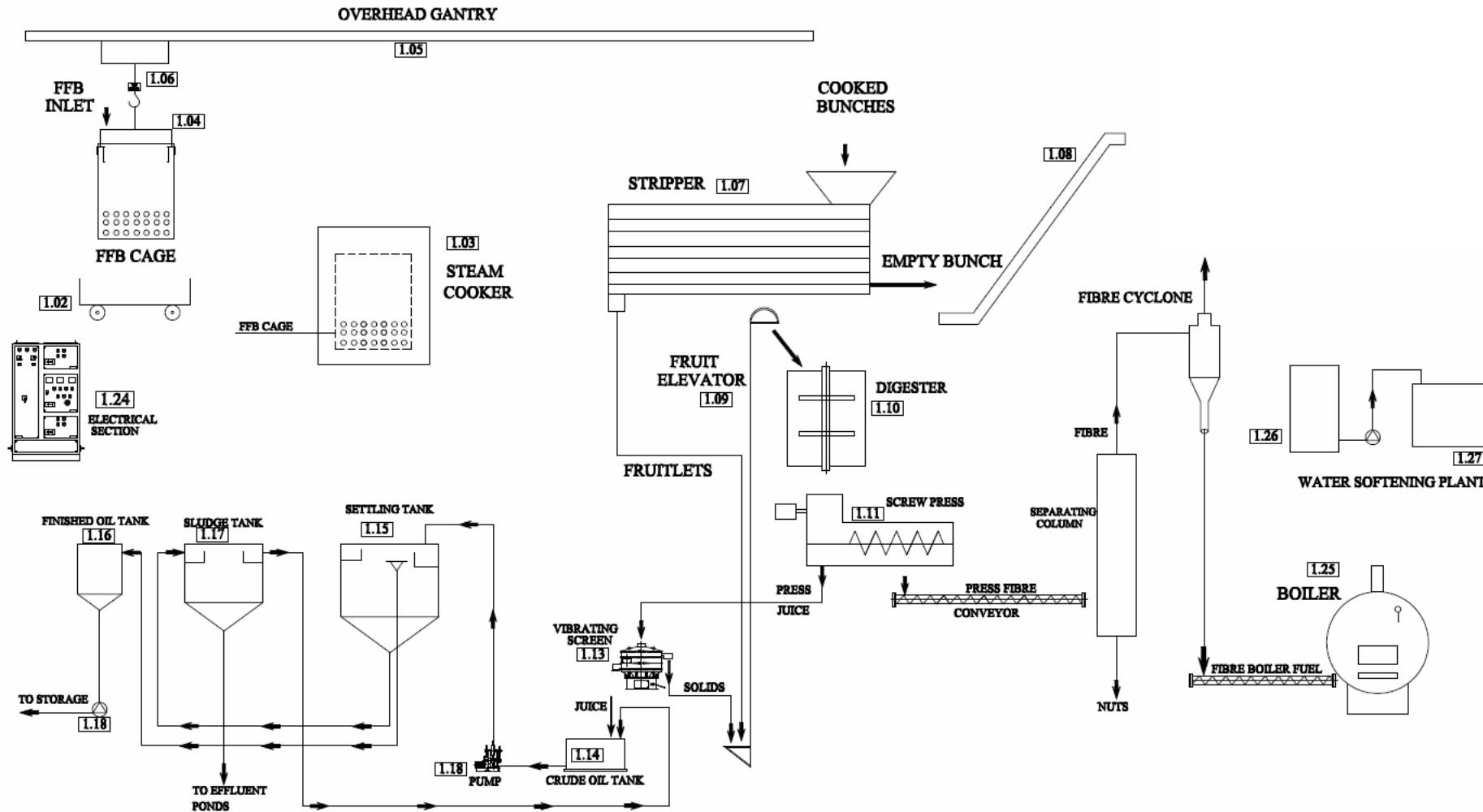
## *Palm Oil Site Near Makarie*



## *Makarie Palm Oil Project*

- FFB will be bought from local farmers by truck in the local area for \$44-66/t depending on size
- The FFB will conservatively have about 17-17.7% palm oil recovery
- A 1tphr Crude Palm Oil (“CPO”) processing plant is expected to produce about 67-88t/month of CPO
- CPO will be priced at \$825/t in 20L containers at the factory gate
- Electricity can be supplied for the plant at around \$0.235/kW
- Cashflows can be increased by doubling the size of the CPO processing plant and adding a bottling plant and a soap plant at a later stage.

# Makarie Palm Oil Processing Plant



## *Makarie Palm Oil Project Illustrative Forecast Cash Flows*

Item	2016	2017	2018	2019
Opening Position	\$0	\$13,821	\$69,505	\$927,331
Capital Introduced	\$500,000	\$150,000	\$150,000	\$0
Revenue	\$0	\$991,161	\$1,844,266	\$2,546,012
Capital Expenditure	-\$486,179	-\$541,373	-\$274,800	\$0
Operating Expenditure	\$0	-\$544,104	-\$861,640	-\$1,143,140
Closing Position	\$13,821	\$69,505	\$927,331	\$2,330,203

Source: Astratec Africa Ltd (see [www.tomcoenergy.co.uk](http://www.tomcoenergy.co.uk))

Note: Assumes no debt funding and associated interest costs.

**The projections on this slide are for illustrative purposes only, do not constitute forecasts and should not be relied upon. Levels of capital introduced, revenue, capital expenditure and operating expenditure are subject to numerous external factors (including prevailing market conditions) which may result in such projections not being met.**

# Makarie Palm Oil Mill (POM) Project Timetable

	2016					2017												2018												2019																																																																																																																																																																																																																																																																																																																																																																																																																																																																																																																																																																																																																																																																																																																																																																																																																																																																																																																																																																																																																																																																																																																																																																	
	A	S	O	N	D	J	F	M	A	M	J	J	A	S	O	N	D	J	F	M	A	M	J	J	A	S	O	N	D	J	F	M	A	M	J	J	A	S	O	N	D																																																																																																																																																																																																																																																																																																																																																																																																																																																																																																																																																																																																																																																																																																																																																																																																																																																																																																																																																																																																																																																																																																																																																						
<b><u>1TPH PALM OIL MILL</u></b>																																																																																																																																																																																																																																																																																																																																																																																																																																																																																																																																																																																																																																																																																																																																																																																																																																																																																																																																																																																																																																																																																																																																																																																															
POM 1 tph Manufacture																																																																																																																																																																																																																																																																																																																																																																																																																																																																																																																																																																																																																																																																																																																																																																																																																																																																																																																																																																																																																																																																																																																																																																																															
Shipments																																																																																																																																																																																																																																																																																																																																																																																																																																																																																																																																																																																																																																																																																																																																																																																																																																																																																																																																																																																																																																																																																																																																																																																															
Site Civil Works																																																																																																																																																																																																																																																																																																																																																																																																																																																																																																																																																																																																																																																																																																																																																																																																																																																																																																																																																																																																																																																																																																																																																																																															
Installation 1tph POM																																																																																																																																																																																																																																																																																																																																																																																																																																																																																																																																																																																																																																																																																																																																																																																																																																																																																																																																																																																																																																																																																																																																																																																															
POM Production at 1 tph																																																																																																																																																																																																																																																																																																																																																																																																																																																																																																																																																																																																																																																																																																																																																																																																																																																																																																																																																																																																																																																																																																																																																																																															
<b><u>2TPH PALM OIL MILL</u></b>																																																																																																																																																																																																																																																																																																																																																																																																																																																																																																																																																																																																																																																																																																																																																																																																																																																																																																																																																																																																																																																																																																																																																																																															
POM UG 2 tph Manufacture																																																																																																																																																																																																																																																																																																																																																																																																																																																																																																																																																																																																																																																																																																																																																																																																																																																																																																																																																																																																																																																																																																																																																																																															
Shipment																																																																																																																																																																																																																																																																																																																																																																																																																																																																																																																																																																																																																																																																																																																																																																																																																																																																																																																																																																																																																																																																																																																																																																																															
Installation 2tph POM																																																																																																																																																																																																																																																																																																																																																																																																																																																																																																																																																																																																																																																																																																																																																																																																																																																																																																																																																																																																																																																																																																																																																																																															
POM Production at 2 tph																																																																																																																																																																																																																																																																																																																																																																																																																																																																																																																																																																																																																																																																																																																																																																																																																																																																																																																																																																																																																																																																																																																																																																																															

## *Makarie Palm Oil Project Capital Costs*

Item	2016	2017	2018	2019
Palm Oil Mill 1 TPH	\$346,509			
Palm Oil Mill 1-2 TPH UG		\$215,376		
Site Civil Works Phase 1	\$119,670			
Site Civil Works Phase 2		\$120,197		
CPO Packaging Plant 2TPD		\$145,800		
Soap Plant 2 TPD			\$274,800	
Trucks	\$20,000	\$60,000		
<b>TOTAL CAPITAL COSTS</b>	<b>\$486,179</b>	<b>\$541,373</b>	<b>\$274,800</b>	<b>\$0</b>

# *Company Structure*

## Current Share Structure

(Market Cap £2.38 million @ 0.115p share price - as at 17:30 Hrs 16th August 2016)

– Kenglo One Ltd	492,920,548	23.91%
– Dominic Redfern and Sarah Cook	176,416,665	8.56%
– Other Shareholders	1,392,137,700	67.53%
– <b>TOTAL</b>	<b>2,061,474,913</b>	<b>100.0%</b>



**Nominated Advisors to TomCo**  
SP Angel Corporate Finance LLP  
T: +44 20 3470 0470

**Financial PR**  
Tavistock Communications  
T: +44 20 7920 3150  
E: [eportman@tavistock.co.uk](mailto:eportman@tavistock.co.uk)

---

TomCo Energy Plc  
22a St. James's Square  
London SW1Y 4JF

Tel: +44 20 3823 3635  
[info@tomcoenergy.uk.com](mailto:info@tomcoenergy.uk.com)  
[www.tomcoenergy.uk.com](http://www.tomcoenergy.uk.com)